

ELYPS

**• USER •
MANUAL**



**S
W
I
S
S**

**M
A
D
E
+**

COMPACT PA SYSTEMS



SCHERTLER



V I E N

W W W . S C H E R T L E R . C O M

INTRODUCTION

Thank you for choosing the **ELYPS** PA system. ELYPS represents the state of the art in Swiss amplifier design, reflecting all the needs of the user.

ELYPS is a modular analog amplification system and that consists of two models of compact active subwoofer (AB10 or AB12) and two models of passive satellites (PT6 or PT8). The sub and sat can be combined to create various solutions (1 sub + 1 sat, 1 sub + 2 sat, 2 sub + 2 sat) in order to suit a wide variety of rooms and gigs.

The system has been engineered for professional use.

The subwoofers are constructed using BJT technology, incorporating a linear power supply for excellent bass response and efficient stereo effect. Sub levels can be adjusted from -7dB to +2dB. Each satellite contains a passive crossover featuring a custom coil.

Easy to transport and set up in live performance situations, ELYPS systems are ideal for use with acoustic instruments and in jazz or DJ sets. They are highly-efficient compact PA systems for use in small to medium sized venues such as piano bars, gyms, conference rooms, ballroom and theaters.

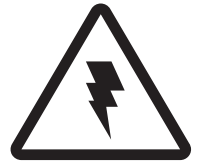
To make the most of your ELYPS system and to ensure trouble-free operation, **please read this manual carefully** before using the amp for the first time. We also advise keeping the manual for future reference.

IMPORTANT SAFETY INFORMATION

SAFETY FIRST!

Safety is of major importance when operating any electrical equipment, so please note the following:

On a product, a lightning flash within a triangle indicates the presence of uninsulated “dangerous voltage” within the product enclosure. This may be of sufficient magnitude to cause risk of electric shock.



ELECTRICAL SAFETY

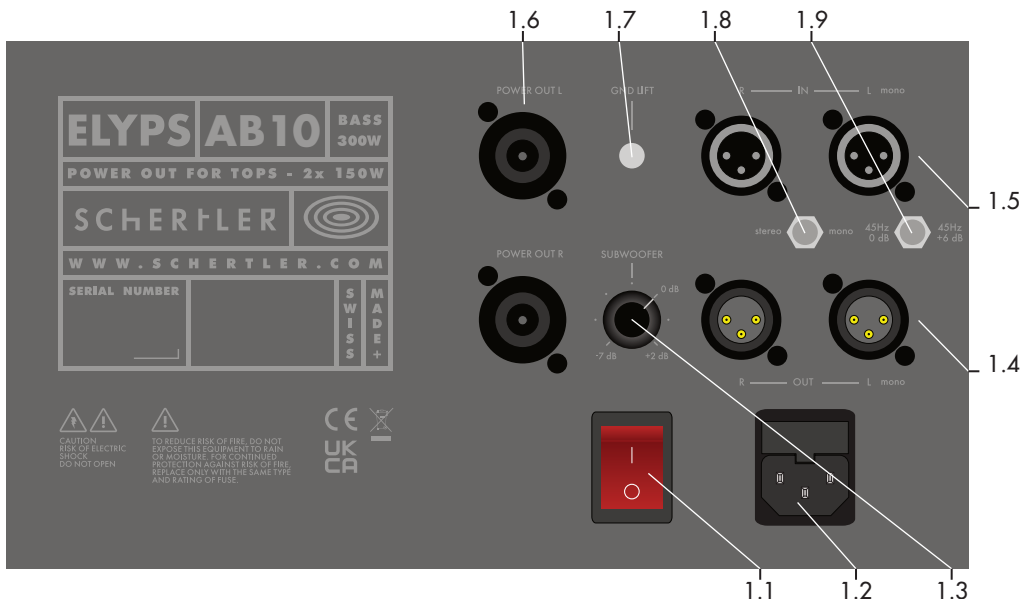
- Before connecting your PA system to the mains, make sure that the mains voltage does not exceed the voltage specified on the device.
- Do not use your PA system if its mains cable or plug are not in perfect condition. Replace these as necessary. The replacement cable must be the same as the original.
- Your PA system should only be connected to a mains socket with a ground protection system.
- When using or installing your PA system, make sure that the mains socket and the amplifier’s mains cable and plug are easily accessible.
- Do not, under any circumstances, defeat the safety purpose of the polarized or grounding-type plug. A polarized plug has two blades with one wider than the other. A grounding-type plug has two blades and a third grounding prong. The wide blade and third prong are provided for your safety. If the supplied plug does not fit your mains socket, consult an electrician for replacement of the obsolete socket.
- Do not expose your PA system to rain or any other water (even in small amounts). Do not use the PA system near water.
- Avoid spilling drinks or any other liquids on the PA system.
- Do not operate your PA system in excessively humid conditions. Avoid excessive heat from sunshine, fire or similar. If the PA system is being used in a dusty environment, make sure it is adequately protected.
- Avoid using or installing your PA system near any heat sources such as radiators, heat registers, stoves, or other heat-producing apparatus. Do not put any sources of open flame (e.g. candles or pyrotechnics) on or near the PA system.
- Do not cover your PA system during use, or obstruct the ventilation flow in any way.
- Always leave sufficient clearance between the heat sink and any other surface.
- Unplug your PA system during lightning storms, or if it is not going to be used for a while. (Remove the plug from the mains socket to completely disconnect the PA system.)
- Your PA system does not contain any “user serviceable” parts. Servicing and/or repairs should only be carried out by qualified personnel. See MAINTENANCE AND REPAIR.

OPERATIONAL SAFETY

- During installation or live performances, make sure that your PA system's power supply cable cannot be walked on, tripped over or "pinched" – particularly at sockets, around waste bins etc. Also make sure that the power supply cable is not "stressed" at its point of connection to the PA system.
- To avoid interference, do not install your PA system near power transformers, TV sets, RF transmitters, electric motors, or any other sources of electrical energy.
- To avoid potential accidents, only use attachments, accessories and other equipment such as carts, stands, tripods, brackets or cases that are specified or recommended by the manufacturer, or sold with your mixer.
- Loud volume levels can cause irreparable damage to hearing, so avoid the following while using your PA system:
 - acoustic feedback (never point microphones directly at a loudspeaker)
 - high levels of distortion
 - impulse noises (loud "pops") that can occur when a device is switched on/off, connected to or disconnected from a system.

MAINTENANCE AND REPAIR

- Your PA system can be carefully cleaned, as necessary, using a dry cloth. No water must be used.
- When cleaning, do not use any solvents (such as acetone or alcohol). These could damage the PA system's finish and its labeling.
- Visually check your PA system on a regular basis for any signs of wear and tear or damage, but do not attempt any kind of servicing or repair.
- If your PA system malfunctions, or has been damaged, e.g. if the power supply/cable or plug is damaged, liquid has been spilled or objects have fallen inside, the PA system has been exposed to rain or moisture, does not operate normally, or has been dropped, please call your nearest SCHERTLER technical assistance centre. (For more information, contact us at the address on the last page of this manual.)



1.1 POWER ON/OFF: System ON/OFF switch

1.2 MAIN POWER CONNECTION:

Connection to mains (EU version 230V AC / USA version 120V AC - 50Hz/60Hz)

Fuse value: EU - T 3.15 A L250 V / USA - T 6.3 A L 250 V

PLEASE ENSURE THE PROPER VOLTAGE AND USE THE ORIGINAL CONNECTION CABLE

1.3 SUBWOOFER: This control regulates the subwoofer level

1.4 INPUTS LEFT /RIGHT: This input is electronically balanced for XLR type connections.

1.5 OUTPUTS LEFT/RIGHT: XLR balanced type connector for connections of external systems.

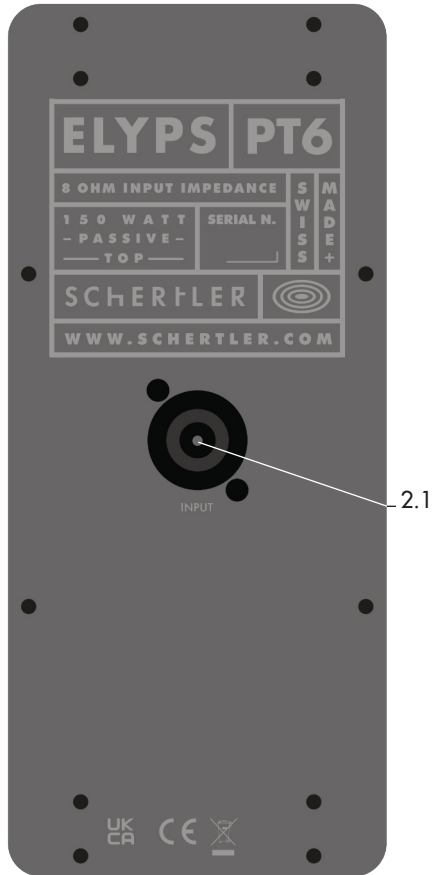
1.6 POWER OUTPUTS LEFT/RIGHT: Amplified outputs with Speakon type connectors for connecting left and right satellites

1.7 GROUND LIFT: This switch connects and disconnects the ground

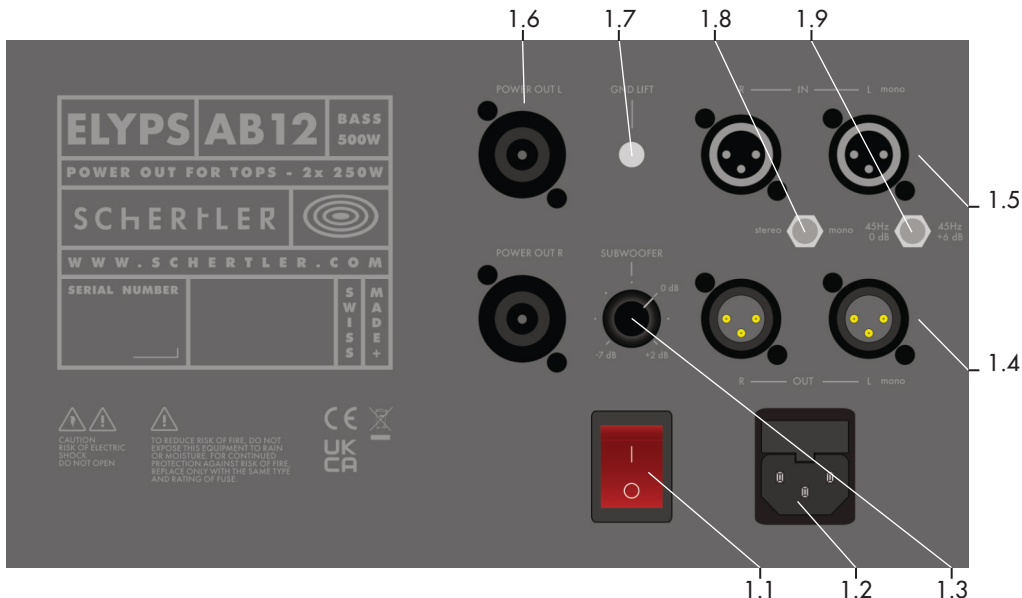
1.8 MONO/STEREO SWITCH: When only one signal is used or only one sat is combined to the sub, this switch must be set to the MONO position in order to receive only one signal from the mixer (left or right main output, connected to LEFT input) and send it to the satellite(s).

When a stereo signal is used, this switch must be set to the STEREO position in order to receive both left and right signals from the mixer and send each signal to the relevant satellite.

1.9 BASS ENANCHER: This button provide a boost of +6 dB at 45 Hz



2.1 INPUT: Sat input, connect to power out with a speakon cable



1.1 POWER ON/OFF: System ON/OFF switch

1.2 MAIN POWER CONNECTION:

Connection to mains (EU version 230V AC / USA version 120V AC - 50Hz/60Hz)

Fuse value: EU - T 3.15 A L250 V / USA - T 6.3 A L 250 V

PLEASE ENSURE THE PROPER VOLTAGE AND USE THE ORIGINAL CONNECTION CABLE

1.3 SUBWOOFER: This control regulates the subwoofer level

1.4 INPUTS LEFT /RIGHT: This input is electronically balanced for XLR type connections.

1.5 OUTPUTS LEFT/RIGHT: XLR balanced type connector for connections of external systems.

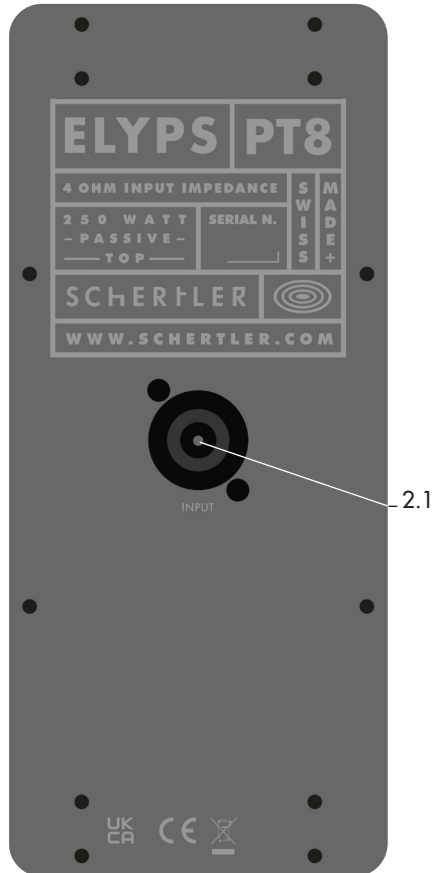
1.6 POWER OUTPUTS LEFT/RIGHT: Amplified outputs with Speakon type connectors for connecting left and right satellites

1.7 GROUND LIFT: This switch connects and disconnects the ground

1.8 MONO/STEREO SWITCH: When only one signal is used or only one sat is combined to the sub, this switch must be set to the MONO position in order to receive only one signal from the mixer (left or right main output, connected to LEFT input) and send it to the satellite(s).

When a stereo signal is used, this switch must be set to the STEREO position in order to receive both left and right signals from the mixer and send each signal to the relevant satellite.

1.9 BASS ENANCHER: This button provide a boost of +6 dB at 45 Hz



2.1 INPUT: Sat input, connect to power out with a speakon cable

TECHNICAL INFORMATION

AB10

Weight	18 kg
Dimensions (LxDxH)	32 x 51 x 49 cm
Frequency Response (@+/-3dB)	50 to 150 Hz
Sensitivity	n.a.
SPL max	117 dB
Speakers	10" woofer
Crossover	Active - 24 dB/octave
Freq. cutoff	150 Hz
System - Format	Bass reflex
Construction	18 mm birch BB laminated
Input connector	XLR (line input)
Input sensitivity	0 dBu
Input impedance	10 k Ω
Output connector	Speakon power output, XLR balanced parallel out
Controls	Volume + ground lift + mono/stereo
Power Handling	300 W
Stand mounting	Flange mount \varnothing 36 mm, h=102 mm on top
Available versions	Light wood and anthracite

PT6

Weight	6 kg (each)
Dimensions (LxDxH)	21 x 24 x 34 cm (each)
Frequency Response (@+/-3dB)	150 to 20 kHz
SPL max	113 dB
Speakers	6" woofer + 1" compression driver (each)
Crossover	Passive - 18 dB/octave
System - Format	Closed box
Construction	12 mm birch BB laminated
Input connector	Speakon (power input)
Input impedance	passive 8 Ω
Output connector	No
Controls	No
Power Handling	150 W (each)
Stand mounting	Flange mount \varnothing 36 mm, h=102 mm on bottom (each)
Available versions	Light wood and anthracite

AB12

Weight	24 kg
Dimensions (LxDxH)	36 x 49.5 x 49 cm
Frequency Response (@+/-3dB)	45 to 150 Hz
Sensitivity	n.a.
SPL max	121 dB
Speakers	12" woofer
Crossover	Active - 24 dB/octave
Freq. cutoff	150 Hz
System - Format	Bass reflex
Construction	18 mm birch BB laminated
Input connector	XLR (line input)
Input sensitivity	0 dBu
Input impedance	10 k Ω
Output connector	Speakon power output, XLR balanced parallel out
Controls	Volume + ground lift + mono/stereo
Power Handling	500 W
Stand mounting	Flange mount \varnothing 36 mm, h=102 mm on top
Available versions	Light wood and anthracite

PT8

Weight	7 kg (each)
Dimensions (LxDxH)	24 x 24 x 38 cm (each)
Frequency Response (@+/-3dB)	150 to 20 kHz
SPL max	118 dB
Speakers	8" woofer + 1" compression driver (each)
Crossover	Passive - 18 dB/octave
System - Format	Closed box
Construction	12 mm birch BB laminated
Input connector	Speakon (power input)
Input impedance	passive 4 Ω
Output connector	No
Controls	No
Power Handling	250 W (each)
Stand mounting	Flange mount \varnothing 36 mm, h=102 mm on bottom (each)
Available versions	Light wood and anthracite

Available combinations:

ELYPS 450	1x PT6 + 1x AB10
ELYPS 600	2x PT6 + 1x AB10
ELYPS 750	1x PT8 + 1x AB12
ELYPS 1000	2x PT8 + 1x AB12
ELYPS 1500	2x PT8 + 2x AB12



APPENDIX

WARRANTY

All SCHERTLER products are covered by a limited two-year factory warranty in respect of manufacturer defects. Details can be obtained from your local dealer / representative.

SCHERTLER SA strongly believes in "common sense". Therefore, misuse of our products is not covered under rights obtained through our warranty policy, or through internationally recognized terms and conditions. For more information on warranty, please visit the General Condition's page at www.schertler.com

PRODUCT DISPOSAL

This product must not be disposed of in general household waste. It should be taken to a disposal center for electrical / electronic waste. Please note any local or national regulations that may be applicable here.

TRADEMARKS

The SCHERTLER® name and logo are registered trade names / trademarks of SCHERTLER SA Switzerland. All SCHERTLER® products use proprietary technology and are covered by one or more worldwide patents.

DISCLAIMER

All information and technical specifications published here are based on data that was available at the time of publication. SCHERTLER is, however, constantly aiming to improve its range of products and therefore reserves the right to amend product specifications and information without notice. SCHERTLER takes no responsibility for any direct or indirect damage (including loss of profit), which arises as a result of, or in connection with the information in this manual.

COPYRIGHT

This manual is the property of SCHERTLER SA and, as such, is subject to Swiss copyright law. No part of this manual should be reproduced, edited or distributed without prior consent from SCHERTLER.

